

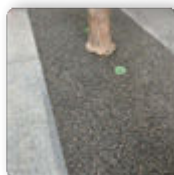
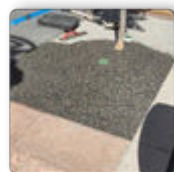
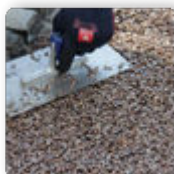


# Xtreme Gravel Lock

## VDW 520

The PHNA Xtreme Gravel Lock is a 2-component epoxy to be mixed with any clean aggregate to provide solutions for pathways, wide paver joints, tree pits, and more. The following are a few specific details about the product:

- Highly water-permeable
- Suitable for extra-wide joints
- Can be designed to accommodate up to light vehicular traffic loads
- Pressure washer friendly
- High UV resistance
- Very high resistance to yellowing
- Suitable for clean aggregates 1/16" to 1" in diameter
- Suitable for glass chippings
- Suitable for damp aggregates



## Technical Data

### Application Time

Approx. 30 minutes at 20°C | 68°F\* application temp.  
\*Quick hardening at higher temperatures, and slow hardening at lower temperatures.

### Application Temperature

2-26°C | 37-80°F (Do not lay onto frozen ground.)

### Minimum Depth Requirements

1.5" for aggregates less than 1/2" diameter  
For aggregates greater than 1/2" diameter: depth must equal min. 3x avg. diameter

For vehicular traffic, product must be laid on a permeable concrete or mortar bed (we recommend PHNA Xtreme Trass / VDW 480)

### Mixing Ratios

The contents of one unit (5 kg) can bind a maximum of about 240 lbs. of aggregate (~160 lbs. glass chippings)  
(Both bottles of A & B components have 1/4 delineation markings to accommodate mixing in smaller batches)

### Water Permeability

Very high

### Storage Life

12 months if stored unopened in sealed and undamaged packaging. Must also be kept dry and frost-free. Do not store at temperatures above 20°C | 68°F

**P:** (717) 351 - 4021

**W:** <https://www.shsdistributors.com/>

**E:** [contact@shsdistributors.com](mailto:contact@shsdistributors.com)



# Installation Instructions

## for PHNA Xtreme Gravel Lock / VDW 520

### 1. Construction Site Requirements

For pedestrian areas: A stable and well-compacted gravel/sand bedding layer. The depth of the PHNA Xtreme Gravel Lock should be a minimum of 1.5" after compaction and finishing. For vehicular traffic: The product must be laid on a permeable concrete or mortar bed - we recommend the PHNA Xtreme Trass (VDW 480). All elements must be correctly designed and installed for the anticipated traffic loads and in accordance with ASTM. The Xtreme Gravel Lock cannot be used to compensate for any settlement of the substructure.

### 2. Preparation

Clean the base material and any joint sides to ensure no contaminants or uncompacted materials are present. Mask any adjacent areas that are not to be jointed in order to prevent any spots or staining from the epoxy. We recommend a test area be prepared, particularly with any sensitive materials, prior to installation.

#### **Material Preparation:**

Any dirty or dusty aggregates should be washed thoroughly and dried prior to mixing to avoid discoloration and/or loss of strength. Aggregate may be damp, but cannot be wet.

### 3. Mixing

#### **Tools needed:**

Heavy duty paddle/drill mixer or suitable gravity mixer, large mixing tub, shovel, screeding tools, and trowels.

Add the appropriate amount of aggregate into the mixing tub or gravity mixer, followed by the appropriate amount of both A & B components of the Xtreme Gravel Lock. (The 5kg units of Xtreme Gravel Lock will have 1/4 markings on each bottle - each 1/4 to be mixed with a maximum of 60 lbs. aggregate.) Mix for 5 minutes until homogeneous.

#### **Pro Tip:**

For large areas where mixing more than 60 lbs. at one time may be necessary, we recommend using a gravity mixer. Ensure the mixer is clean and has not been previously used to mix concrete or mortar.

If using a gravity mixer, also adhere to the 5 minute mix time, then material can be transferred to a clean wheel barrow for transportation if needed.

### 4. Application

Apply the freshly mixed material onto the prepared substrate. Spread and level off with appropriate screeding tools or a trowel, then compact and smooth the surface with a trowel. Material may get sticky and more difficult to work with after 30 minutes or in higher temperatures.

### 5. Important Information

Remain off the freshly applied areas and protect them from heavy rain for a period of min. 24 hours. Then the areas can be walked over carefully. In general, a strength test should be carried out before final clearance of the area after 7 days.

Practice has shown that there are minerals for which the epoxy used can produce special effects such as darkening. Over time, this weathers off, and the mineral substance regains its natural color. In covered areas, the weathering process takes longer. With bright white minerals a slightly yellowish color change may occur. Especially with strongly varying UV radiation until complete curing, color differences may occur. These phenomena result from the contact between Xtreme Gravel Lock epoxy and mineral aggregate and are not a design defect. The gloss effect remaining after application will degrade over time from exposure to natural UV light. Despite careful processing, marginal detachment of individual grains cannot be ruled out.

#### **How To Guide**

